

# Gods, Heroes, & Monsters

## CLCV 113

### Summer 2025



**Instructor:** Prof. Vincent Tomasso ([vincent.tomasso@trincoll.edu](mailto:vincent.tomasso@trincoll.edu))

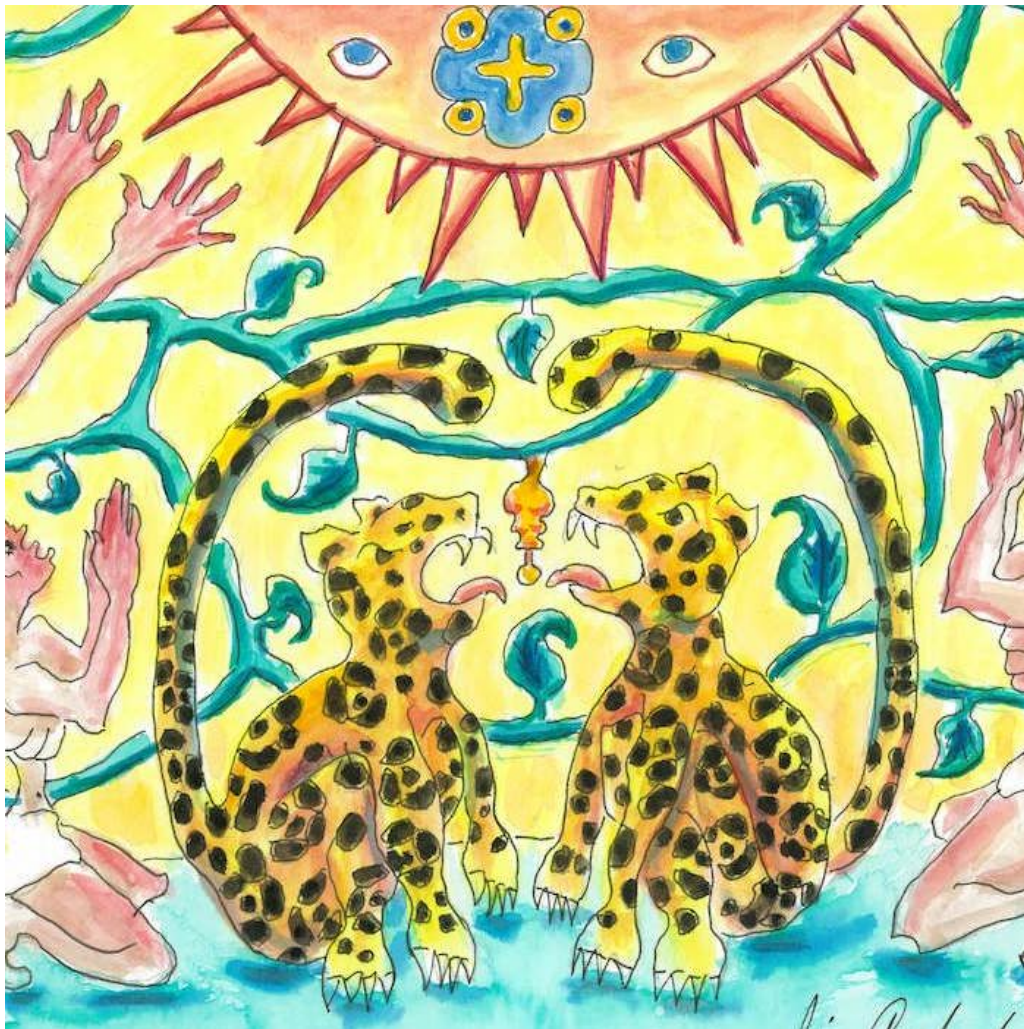
**Meeting:** MTWR: 10:00AM-11:40AM on Zoom

**Office Hour:** on Zoom

**Units:** 1

### Description

In this course, we will learn about myth traditions around the world, from Europe's ancient Greece to south America's Mayans. We will examine the creation and destruction myths, as well as hero myths, of the Greeks, Romans, Hebrews, Mesopotamians, Vikings, native Americans, Mayans, the Chinese, and Africans. Along the way, we will also discuss re-figurations of myths by modern artists and their relevance to us now.



### **Learning Objectives**

By the end of this course, you will...

- ... **describe** the major myth traditions from various world cultures.
- ... **compare** the myths of different cultures to reveal their similarities and differences.
- ... **explain** how and why myths are changed in modern contexts.

### **Prerequisites**

none!

### **Required Text**

none!

### **Evaluation**

participation in class: 12% of the final grade  
worksheets: 19 @ 1% each = 19% of the final grade  
activities: 3 @ 4% each = 12% of the final grade  
project part 1: 20% of the final grade  
project part 2: 25% of the final grade  
presentations: 3 @ 4% each: 12% of the final grade

**Grading Scale**

100-01+ = A+

100-94 = A

93-90 = A-

89-87 = B+

86-84 = B

83-80 = B-

79-77 = C+

76-74 = C

73-70 = C-

69-67 = D+

66-64 = D

63-60 = D-

59-0 = F

**Reading/Viewing Assignments**

Do the assignment before coming to class and be prepared to discuss the material assigned for the day.

I understand that there will be some days when you will not be fully prepared, but you should come to class anyway as you will assuredly learn something. Your participation grade will be affected if you do not fully engage with the rest of the class during each session.

**Moodle & Email**

Other material relevant to this course has been and will continue to be posted on our class page on Moodle. You are responsible for that material.

You are responsible for monitoring your Trinity College email account every day for announcements about this course.

**Academic Accommodations**

Trinity College is committed to creating an inclusive and accessible learning environment consistent with the Americans with Disabilities Act. Students with disabilities who may need some accommodations are urged to contact the Student Accessibility Resource Center as soon as possible, either by dropping into their office on the ground floor of the library or emailing [SARC@trincoll.edu](mailto:SARC@trincoll.edu).

**Attendance**

This class is a **learning community**, in which the participation of every member is important for the learning of all. Because this is an intensive, remote course, you are allowed one (1) day of absence with no questions asked. After that, each absence will result in a zero for the “participation” portion of the grade for that day. The only exception is if you have a note from a medical professional explaining why you have to be absent. You must notify me before the absence.



## Schedule

Date	Subject	Assignment
<b>Week 1</b>		
M May 20	introduction: what is myth?	worksheet #1 due on Moodle by 3 p.m.
T May 21	understanding myth	--read pages 3-15 and 16-22 --worksheet #2 due on Moodle by 3 p.m.
W May 22	creation myths: Greece part 1	--read pages 27-35 --worksheet #3 due on Moodle by 3 p.m.
R May 23	creation myths: Greece part 2	--read pages 36-44 --worksheet #4 due on Moodle by 3 p.m.
<b>Week 2</b>		
M May 27	<b>NO CLASS</b>	Memorial Day --activity #1 due on Moodle by 11:59 P.M.
T May 28	creation/destruction myths: the Romans	--read pages 53-60 & 165-172 --presentation #1 --worksheet #5 due on Moodle by 3 p.m.

W May 29	creation/destruction myths: the Hebrews	--read: pages 53-60 & 165-172 --worksheet #6 due on Moodle by 3 p.m.
R May 30	creation/destruction myths: the Norse	--read: pages 82-91 & 173-180 --worksheet #7 due on Moodle by 3 p.m.
<b>Week 3</b>		
Su June 2		activity #2 due on Moodle by 11:59 P.M.
M June 3	creation myths: Mesopotamians	--read: pages 61-81 --worksheet #8 due on Moodle by 3 p.m. --presentation #2
T June 4	creation myths: native Americans	--read: pages 93-106 --worksheet #9 due on Moodle by 3 p.m.
W June 5	creation myths: Africa	--read: pages 107-114 --worksheet #10 due on Moodle by 3 p.m.
R June 6	creation myths: China	--read: pages 115-130 --worksheet #11 due on Moodle by 3 p.m.
Su June 9		<b>project part 1 due</b>
<b>Week 4: Heroes</b>		
M June 10	creation myths: the Mayans	--read: pages 115-130 --worksheet #12 due on Moodle by 3 p.m.
T June 11	Gilgamesh (Mesopotamia)	--read: pages 192-203 --worksheet #13 due on Moodle by 3 p.m.
W June 12	Gilgamesh (Mesopotamia)	--read: pages 185-191 & 203-213 --worksheet #14 due on Moodle by 3 p.m.
R June 13	Gilgamesh (Mesopotamia)	--read: pages 213-227 --worksheet #15 due on Moodle by 3 p.m.
<b>Week 5: Heroes</b>		
Su June 16		activity #3 due on Moodle by 11:59 P.M.
M June 17	Viking gods (Norse)	--read: pages 254-267 --presentation #3 --watch: <i>Thor</i> --worksheet #16 due on Moodle by 3 p.m.



T June 18	Prometheus (Greece)	--read: pages 396-402 --worksheet #17 due on Moodle by 3 p.m.
W June 19	Raven (native America)	--read: pages 371-380 --worksheet #18 due on Moodle by 3 p.m.
R June 20	Anansi and others (Africa)	--read: pages 381-395 --worksheet #19 due on Moodle by 3 p.m.
Project		
Sun Jun 23	<b>project stage #2 due</b>	by 11:59PM